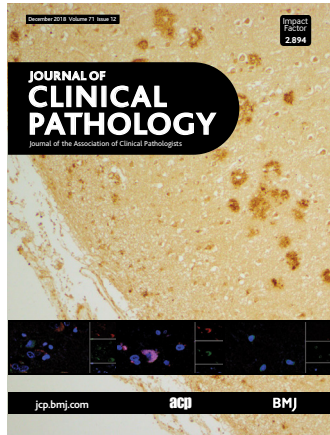


Journal of Clinical Pathology



Cover legend: Neuropathological changes in various regions of the brains of patients with Alzheimer's disease.

Contents

Review

- 1033** Apoptotic colopathy: a pragmatic approach to diagnosis
D M Karamchandani, R Chetty

Best practice

- 1041** Setting up a service for a faecal immunochemical test for haemoglobin (FIT): a review of considerations, challenges and constraints
I M Godber, S C Benton, C G Fraser

Original articles

- 1046** Spectrum of *ELANE* mutations in congenital neutropenia: a single-centre study in patients of Indian origin
A K Arun, A Senthamizhselvi, S Hemamalini, E S Edison, A Korula, N A Fouzia, B George, V Mathews, P Balasubramanian
- 1051** Immunophenotypic dysplasia and aberrant T-cell antigen expression in acute myeloid leukaemia with complex karyotype and *TP53* mutations
K C Dannheim, O Pozdnyakova, P Dal Cin, O K Weinberg
- 1060** Claudin-1 is linked to presence of implants and micropapillary pattern in serous borderline epithelial tumours of the ovary
A El-Balat, I Schmeil, K Gasimli, N Sanger, T Karn, A Ahr, S Becker, R Arsenic, U Holtrich, K Engels
- 1065** Frequencies and patterns of laboratory test requests from general practice: a service evaluation to inform point-of-care testing
T R Fanshawe, J M Ordonez-Mena, P J Turner, A V den Bruel, B Shine, G N Hayward
- 1072** Specific TCR gene rearrangements in mycosis fungoides: does advanced clinical stage show a preference?
E Marks, Y Wang, Y Shi, J Susa, M Jacobson, D Y Goldstein
- 1078** A real-world, comparative study of FDA-approved diagnostic assays PD-L1 IHC 28-8 and 22C3 in lung cancer and other malignancies
C Batenchuk, M Albitar, K Zerba, S Sudarsanam, V Chizhevsky, C Jin, V Burns

December 2018 Volume 71 Issue 12

- 1084** Core needle biopsy as an alternative to whole section in IHC4 score assessment for breast cancer prognostication
M Liu, S-X Tang, J Y S Tsang, Y-J Shi, Y-B Ni, B K B Law, G M K Tse
- 1090** Reduced expression of SIRT1 and SOD-1 and the correlation between these levels in various regions of the brains of patients with Alzheimer's disease
K Cao, Y-T Dong, J Xiang, Y Xu, W Hong, H Song, Z-Z Guan
- 1100** Assessors' and trainees' perceptions of workplacebased assessments in histopathology
D J Brierley, P M Farthing, S Zijlstra-Shaw
- 1108** Clinical utility of reflex testing using focused next-generation sequencing for management of patients with advanced lung adenocarcinoma
T E Miller, M Yang, D Bajor, J D Friedman, R Y C Chang, A Dowlati, J E Willis, N Sadri
- 1116** Feasibility and safety of targeting the anterior superior iliac spine to perform a bone marrow procedure: a prospective, clinical study
L J Reed, S Attarian, T R Olson, S Singh, A Shestopalov, E W Friedman

Short reports

- 1120** Cutaneous immunohistochemical staining pattern of p53 β isoforms
C J Ko, P Myung, D J Leffell, J-C Bourdon
- 1123** Evaluation of a novel liquid biopsy-based ColoScape assay for mutational analysis of colorectal neoplasia and triage of FIT+ patients: a pilot study
M Scimia, J Du, F Pepe, M A Bianco, S Russo Spena, F Patell-Socha, Q Sun, M J Powell, U Malapelle, G Troncone

Virtual case of the month

- 1128** A young patient with a lytic skull lesion
V C-L Chong, C L Tan, Y-L Chee, S De Mel

J Clin Pathol: first published as on 1 December 2018. Downloaded from <http://jcp.bmj.com/> on April 28, 2025 by guest. Protected by copyright, including for uses related to text and data mining, AI training, and similar technologies.



This article has been chosen by the Editor to be of special interest or importance and is freely available online.



Articles carrying the Unlocked Logo are freely available online under the BMJ Journals unlocked scheme. See <http://authors.bmj.com/open-access/>



This journal is a member of and subscribes to the principles of the Committee on Publication Ethics www.publicationethics.org



When you have finished with this please recycle it



The online version of this article contains multiple choice questions hosted on BMJ Learning.